



2024 Quick Reference for

Referring Providers



**Arkansas
Children's**

HOSPITALS • RESEARCH • FOUNDATION

Arkansas Children's Who We Are



HOSPITALS • RESEARCH • FOUNDATION

Arkansas Children's Inc. is the only hospital system in the state solely dedicated to caring for children, which allows us to uniquely shape the landscape of pediatric care in Arkansas. The system includes:

- Arkansas Children's Hospital (ACH)
- Arkansas Children's Hospital West Little Rock Clinic
- Arkansas Children's Hospital Jonesboro Clinic
- Arkansas Children's Hospital Southwest Little Rock Clinic
- Arkansas Children's Northwest (ACNW)
- Arkansas Children's Hospital Pine Pluff Clinic
- Arkansas Children's Care Network (ACCN)
- Arkansas Children's Foundation (ACF)
- Arkansas Children's Research Institute (ACRI)
- Harvey Pediatrics, Operated by Arkansas Children's

Growth Initiatives Team

Arkansas Children's is committed to meeting the needs of referring physicians. The physician liaison team travels the state to visit pediatricians, family practice providers and specialists to share information about Arkansas Children's programs and services.

Please call your physician liaison for help with Healthy Planet Link access, general questions and concerns, troubleshooting for issues with appointments, referrals or reaching Arkansas Children's physicians or if your clinic information changes (moves location, new providers, etc.).



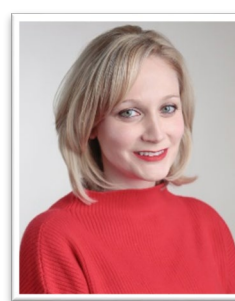
Clay Shuffield
Director of Growth Initiatives
Office: 501-364-3406
shuffieldtc@archildrens.org



Stephanie Pinkerton
Physician Liaison, Northwest
Cell: 479-644-9898
pinkertonsj@archildrens.org



Samantha Hathaway
Physician Liaison
Cell: 501-514-0265
hathawayse@archildrens.org



Erica Bowman
Physician Liaison
Cell: 501-425-8958
mondayee@archildrens.org

Statewide Services



Angel One Transport

24 hours a day

800-ACH-HELP (800-224-4357)

501-364-6429

Angel One Transport services are available 24 hours a day to meet your transport needs. Our trained dispatch personnel will connect you with an accepting physician in the intensive care service needed.

Arkansas Children's Care Network

Arkansas Children's Care Network (ACCN) fundamentally transforms health care delivery for the children of Arkansas through a physician-led clinically integrated network (CIN) comprised of health care professionals who provide coordinated and accountable pediatric care supported by a sustainable financial model. This network improves quality, access, patient/family experience and affordability of health care while also increasing physician engagement and satisfaction. ACCN is the nation's first statewide pediatric CIN, promoting collaboration among primary care and specialty providers who treat children across Arkansas. ACCN enables its partners to work together in a clinically integrated manner, using common health protocols and pathways so that each child receives quality care at the most appropriate location. To learn more, visit accnconnect.org.

Arkansas Children's Operations Center

24 hours a day

888-764-KIDS (5437)

501-364-4455

The Arkansas Children's Operations Center offers a one-call transfer and direct admissions system, providing a centralized entry point to **all Arkansas Children's facilities**, streamlining the transfer process. Our hospital operators can set up provider-to-provider calls. Referring physicians are connected directly, eliminating the maze of phone calls for patient transfer.

Healthy Planet Link

Healthy Planet Link is a secure web portal that connects you to information stored in our EMR for your referred and admitted patients. This portal allows you to:

- Access patients' results, notes, orders and more
- Request appointments/refer patients
- Place lab and imaging orders
- Receive automatic messages about important patient events
- No software to install

To sign up, please choose a site administrator for your clinic and have them visit archildrens.org/healthyplanet. After requesting a new account through the site, they will be sent their login information and will be able to add other users. For help with Healthy Planet Link, please contact your physician liaison.

Statewide Services

MyChart

Parents of referred patients can sign up for MyChart to manage their child's medical records and connect with their Arkansas Children's medical team online. MyChart enables a parent to:

- Manage their child's health information
- Communicate with their child's doctor
- Access test results faster
- Manage appointments
- Request prescription refills

Parents can sign up for MyChart by visiting archildrens.org/mychart.

Neonatal Consultation

24 hours a day

800-ACH-HELP (800-224-4357)

Consultations with our neonatologists are available 24 hours a day. Angel One dispatch personnel will connect you with a neonatologist via telephone or through telemedicine to discuss your patient(s).

Nursery Alliance

The Nursery Alliance creates networking and learning opportunities for both hospital members and Arkansas Children's Hospital, shared between people who are caring for newborns to work together to improve the health and well-being of babies and their families. Neonatologists at ACH provide consultations to physicians, educational support, quality data review, implementation of best practices and provide training as needed to help member hospitals provide the best care possible. ACH nurses and other key interdisciplinary care teams are available for consultations, staff education and share access to best practice standards of care to assist member hospital teams in the care of infants and high-risk newborns.

For more information, visit archildrens.org/nurseryalliance or contact Shankar Kathiresan, Nursery Alliance Coordinator, at 501-831-0275 or KathiresanS@archildrens.org.

Peds PLACE

Peds PLACE (Physician Learning and Collaborative Education) is a weekly, interactive telemedicine conference for pediatrics. It takes place Thursdays at 12:10 p.m. and CME credit is available.

For more information, visit archildrens.org/pedsplace.



Arkansas Children's Hospital (ACH)

1 Children's Way, Little Rock, AR 72202

Appointments: 501-364-4000

Direct Admissions: 888-764-5437

Emergency Department: 501-364-1185

Sub-Specialty Services Scheduling

Referrals and orders are submitted through **Healthy Planet Link**. Please include applicable clinic notes, lab and test results, and patient demographics. Arkansas Children's Hospital (ACH) has more than 80 specialty clinics. [A listing of clinics can be found on pages 7-8.](#)



Numbers to Know

ACH Scheduling	501-364-4000
ACH Fax	501-978-6440
ACH Medical Records	501-364-1152 Fax: 501-364-3968
Managed Care Referral Line	501-364-1291 / 800-831-0538

ACH West Little Rock Clinic

16101 Cantrell Road, Suite 114, Little Rock, AR 72223

Clinic Main Line: 501-364-8957

Fax: 501-364-8975

Hours of Operation: Monday – Friday, 8 a.m. - 4:30 p.m.

Sub-Specialty Services

Referrals and orders are submitted through **Healthy Planet Link**. Please include applicable clinic notes, lab and test results, and patient demographics. [Clinic appointments are scheduled through Arkansas Children's Hospital in Little Rock](#) with patient appointments at the ACH West Little Rock Clinic.

Specialty Clinics

- Center for Obesity and its Consequences in Health (COACH)
- Diabetes
- Endocrine
- Ear, Nose and Throat
- Gender Services



All specialty clinics require a physician referral at 501-364-4000.

Arkansas Children's

Sub-specialties

Adolescent Medicine Clinic

Allergy Clinic

Asthma Clinic

Audiology

Cardiology Clinic/Heart Station

Cleft Clinic

CoBALT Clinic

Complex Care Clinic

Dermatology

Eating Disorders Clinic

Endocrine Clinic

- COACH Clinic
- Diabetes Clinic

ENT

- Aerodigestive Clinic
- Dream Clinic
- Vascular Anomalies

Eosinophilic Disorders Clinic

Eye Center

Gastroenterology, Hepatology and Nutrition

Genetics and Metabolic

Growth and Development Clinic

Gynecology Clinic

Hem/Onc Brain and Spinal Cord Tumor Clinic

Hemophilia Clinic

High Risk Newborn Follow-up Clinic

Immunology Clinic

Infectious Disease Clinic

Nephrology/Hypertension/Renal Transplant Clinic

- Dialysis Center

Nephrology/Urology Complex Care Clinic

Neurology

- Concussion Clinic
- Epilepsy
- Headache
- MEG Lab
- Multiple Sclerosis & Demyelinating Disorders Clinic
- Muscular Dystrophy & Neuromuscular Clinics
- Neurofibromatosis
- Neurometabolic/Neurogenetics Clinic
- Neuro-ophthalmology
- Neurophysiology Lab

Neurology *continued*

- Neuropsychology
- Neuroradiology
- Neurovascular Clinic
- Rehab – Spasticity Management & Botox Clinic
- Rehabilitation Clinic
- Spasticity and Intrathecal Baclofen Pump Clinic
- Spinal Cord Disorders Clinic
- Spinal Muscular Atrophy Clinic
- Tourette Center
- Tuberous Sclerosis

Neurosurgery Clinic

Ortho, Sports Medicine and Fracture Clinic

- Brachial Plexus Clinic
- Hand Clinic
- Bone Tumor Clinic (ortho oncology)
- Spine
- Urgent Care (Please see next page)

Pain Management Clinic

Plastic and Reconstructive Surgery

- Craniofacial

Pulmonary Clinic

- Sleep Disorders Clinic

Rice Medical Clinic in the Clark Center

Rheumatology Clinic

Speech Pathology

Surgery Clinic

Urology Clinic

To schedule a patient for the following sub-specialties, please contact:

Referral Phone: 501-364-4000

Fax: 501-978-6440

Clinics with different phone numbers are listed on the next page.

Arkansas Children's

Sub-specialties *continued*

Sub-Specialty	Phone	Fax
Burn Center	501-364-1323	501-364-3268
Burn Center Wound Clinic	501-364-1317	501-364-1649
Cardiac Catheterization Lab	501-364-1628	501-978-6440
Cardiothoracic Surgery	501-364-5858	501-978-6440
Craniofacial Orthodontics	501-364-1816	501-364-6800
Craniofacial Maxillofacial Clinic	501-364-5775	501-978-6440
Dental Clinic (special needs patients only)	501-364-1816	501-364-6800
Gender Clinic	501-364-6601	501-364-6626
Hematology/Oncology	501-364-2270	501-978-6440
Hematology/Oncology Infusion	501-364-4627	501-978-6440
Pediatric Hospital Medicine	501-364-4361	501-364-3404
Physical Therapy, Occupational Therapy, Orthotic and Prosthetic Center	501-364-1192	501-364-3564
Pulmonary Hypertension	501-364-1479	501-978-6440
Orthopedic Urgent Care M-F 8 a.m.-3 p.m. (same day or acute)	501-366-5482	

Arkansas Children's

Outpatient Testing

Testing	Phone	Fax
Outpatient Testing	501-364-1010	501-364-3578
Histology Lab	501-364-4238	501-364-3155
Hematology/Coagulation/Special Coagulation Lab	501-364-1313	501-364-1550
Metabolic Genetics Lab	501-364-1311	501-364-6910
Microbiology/Virology Lab	501-364-4104	501-364-1265
Molecular Diagnostics Lab	501-364-4242	501-364-6880
Molecular Genetics Pathology Lab	501-364-4245	501-364-1733
Special Immunology Lab	501-364-1804	501-364-6880
Transfusion Medicine/Blood Bank	501-364-1314	501-364-1324
Gastroenterology Lab	501-364-4633	501-364-4658
Neurophysiology Lab	501-364-4000	501-978-6440
Pulmonary Lab	501-364-1819	501-364-1887
Radiology	501-364-4000	501-364-3549
PACS support*	501-364-4000	achpacs@archildrens.org
Bone Densitometer*	501-364-1180	501-364-3549
Computerized Tomography*	501-364-1308	501-364-3549
Diagnostic Radiology*	501-364-7774	501-364-3549
Interventional Radiology*	501-364-4975	501-364-3549
Magnetic Resonance Imaging*	501-364-3959	501-364-3549
Nuclear Medicine*	501-364-1180	501-364-3549
Ultrasound*	501-364-1181	501-364-3549
Sleep Disorders Lab	501-364-1893	501-364-6878
Tissue Typing, HLA & Immunogenetics Labs	501-686-7257	501-686-7443
Urodynamic Lab	501-364-4000	501-364-3960

Service Hours Admissions

7 days a week
7 a.m. - 9 p.m.

Emergency Department

24 hours, 7 days a week

Outpatient Lab

Monday - Friday
8 a.m. - 4:30 p.m.

Imaging Center

CT 7:30 a.m. - 6p.m. M-F
MRI 7:30 a.m. - 7:30 p.m. M-F
MRI 8 a.m. - 4 p.m. Sat.
X-Ray 6 a.m. - 6 p.m.
US 7:30 a.m. - 6 p.m.
Fluoro 8 a.m. - 4 p.m.

During normal service hours patients will check in to Radiology.

Same-day add on imaging exams must be approved by the modality.

After hours imaging and lab draws will go through the ED unless approved by Radiology.

***These services are available for same day scheduling with approval from the modality.**

ACH Jonesboro Clinic

520 Carson Street, Jonesboro, AR 72401

Clinic Main Line: 870-336-2175

Fax: 870-336-2180

Hours of Operation: Monday – Friday, 8 a.m. - 4:30 p.m.

Sub-Specialty Services

Referrals and orders are submitted through **Healthy Planet Link**. Please include applicable clinic notes, lab and test results and patient demographics. **Clinic appointments are scheduled through Arkansas Children's Hospital in Little Rock** with patient appointments at Jonesboro. Please indicate Jonesboro as your preferred appointment location.

Full-Time Clinics

- Cardiology – Sam Lee, MD
- Endocrine – Sam Middleton, APRN
- GI – Sulaiman Bharwani, MD
- Pulmonology – Katie Stickler, APRN
- Surgery - Kellie Lisenby, APRN

Monthly Clinics

- Ear, Nose and Throat
- Genetics
- Nephrology
- Neurology (Four consecutive days a month)
- Neurosurgery
- Plastic and Reconstructive Surgery

Bi-Weekly Clinics

- Orthopedics - APRN

Quarterly Clinics

- Adult Congenital Cardiology
- Developmental Rehab
- Endocrine
- Orthopedics - MD

Ancillary Services

- ECHO
- EEG
- EKG, holter and event monitors
- Fetal Echocardiography
- Pulmonary Function Tests
- Ultrasound: Head, Hips, Abdomen



Telehealth

- Asthma
- Endocrine/Diabetes
- Fetal Cardiology
- Nephrology
- Sleep Disorders
- Spinal Cord Disorders
- Urology

All specialty clinics require a physician referral at 501-364-4000.

ACH Southwest Little Rock Clinic

9015 Dailey Drive, Little Rock, AR 72209

Clinic Main Line: 501-364-6560

Fax: 501-978-6440

Hours of Operation: Monday – Friday, 8 a.m. - 4:30 p.m.

Sub-Specialty Services

Referrals and orders are submitted through **Healthy Planet Link**. Please include applicable clinic notes, lab and test results and patient demographics. **Clinic appointments are scheduled through Arkansas Children's Hospital in Little Rock** with patient appointments at Southwest LR Community Clinic. Clinic features include bilingual staff, 15 exam rooms, X-ray suite, laboratory and WIC program accommodations.

Specialty Clinics

- Audiology
- Breastfeeding Medicine
- Ear, Nose and Throat



All specialty clinics require a physician referral at 501-364-4000.

Arkansas Children's Northwest (ACNW)

2601 Gene George Blvd.
Springdale, AR 72762



Main Line: 479-725-6800

Direct Admissions: 888-764-5437

Emergency Department: 479-725-6977

Sub-Specialty Services Scheduling

Referrals and orders are submitted through **Healthy Planet Link**. Please include applicable clinic notes, lab and test results and patient demographics. **Clinics in blue are scheduled through Arkansas Children's Hospital in Little Rock** with patient appointments at ACNW. All others are scheduled through ACNW. Indicate ACNW as your preferred location.

Numbers to Know

ACNW Outpatient Scheduling	479-725-6995	
ACNW Outpatient Fax	479-725-6582	
ACNW Outpatient Lab	479-725-6836	Fax 479-725-6572
ACNW Imaging Services	479-725-6988	Fax 479-725-6582
Arkansas Children's Hospital Scheduling	501-364-4000	
Arkansas Children's Hospital Scheduling Fax	501-978-6440	

- Allergy/Immunology
- Audiology
- Cardiology
- Endocrinology
- ENT – General
- ENT – Cleft Clinic
- ENT – Vascular Clinic
- Gastroenterology
- Gender Clinic
- Genetics
- Gynecology
- Hematology/Oncology
- Hemophilia
- Infectious Disease
- Nephrology
- Neurology
- Neurosurgery
- Occupational Therapy
- Orthopedics
- Outpatient Laboratory
- Physical Therapy
- Plastics
- Pulmonary
- Rheumatology
- Sleep
- Speech
- Sports Medicine
- Surgery Clinic
- Imaging Center: CT, MRI, X-ray, Ultrasound, Swallow Studies
- Rehab Clinic
- Urology
- Ancillary Services: Heart Station, EEG, PFT, Nutrition, Sweat Testing

Service Hours Admissions

Monday - Friday
6 a.m. – 5 p.m.

Emergency Department

24 hours, 7 days a week

Outpatient Lab

7:30 a.m. – 10 p.m. M-F
7:30 a.m. – 4 p.m. Saturday

Imaging Center

CT 7 a.m. – 5 p.m. M-F
MRI 7 a.m. – 7:30 p.m. M-F
X-ray 7 a.m. – 10 p.m. M-F
US 7 a.m. – 6 p.m. M-F
Fluoro Call scheduling

Patients check in with admissions.

After hours imaging and lab draws go through the ED.

Arkansas Children's Northwest

Specialty	Provider	Specialty Nurse Phone Number
Cardiology	Harrison Cobb, MD	479-725-6894
	Kevin Hinkle, MD	479-725-6896
Endocrinology	Heather Johnson, APRN	479-725-6885
ENT	Janine Amos, DO	479-725-6894
	Charles Bower, MD	479-725-6894
	Val Wessel, APRN	479-725-6894
	Amy Williams, APRN	479-725-6894
Gastroenterology	John Alberty, MD	479-725-6905
	Abdel Hai Hammo, MD	479-725-6905
	Kelsey Hindman, APRN	479-725-6905
General Surgery	Sabina Siddiqui, MD	479-725-6895
	David Wigginton, PA	479-725-6895
Genetics	Gerald Schaefer, MD	479-725-6912
Hematology/Oncology	Cristyn Branstetter, MD	479-725-6888/6900
	Bob Saylor, MD	479-725-6888/6900
Neurology	Tonya Balmakund, MD	479-725-6891
	Stephen Jones, MD	479-725-6892
	Collin Swafford, DO	479-725-6887
Orthopedics	Ryan Dewitz, MD	479-725-6893
	Justin Hire, MD	479-725-6893
	Adrienne Koder, DO	479-725-6893
	Justin Morgan	479-725-6893
Palliative Care	Casie James, MD	
Pulmonology	Kristel Holmblad, MD	479-725-6890
	Astryd Menendez, MD	479-725-6889
	Julie Thibodaux, APRN	479-725-6890
Radiology	Radiology Tech	479-725-6847
Sports Medicine	Larry Balle, MD	479-725-6897
	Lauren Poindexter, MD	479-725-6897
	Ramon Ylannan, MD	479-725-6897
Urology	Megan Merrigan, APN	479-725-6913

UAMS Clinics

On ACH Campus

The David M. Clark Center for Safe and Healthy Children is dedicated to the care and treatment of neglected and abused children and their families. It is a single, safe place for children to receive medical, psychological and social health services.

(Child Study Center) Psychiatry Services

Clark Center for Safe & Healthy Children
Phone: 501-364-5150 / Fax: 501-364-3966

Services are available to help with problems related to anxiety, depression, conduct and behavior problems, emotional adjustment difficulties, learning difficulties, attention problems, child management issues and other psychiatric disorders affecting children, adolescents and their families.

CoBALT (Community-Based Autism Liaison & Treatment Project)

Teams are comprised of a medical professional (Physician or Advanced Nurse Practitioner) and a professional who has knowledge of child development who can complete diagnostic testing (Speech Pathologist, Psychologist, or Behavioral Specialist). Teams are located around the state and are seasoned professionals who have worked many years with children. **For a list of available teams and locations, visit cobaltar.org.**

Family Treatment Program in the Clark Center

Clark Center for Safe & Healthy Children
Phone: 501-364-3810 / Fax: 501-364-3816

The Family Treatment Program provides specialized mental health care for victims and family members impacted by sexual abuse.

James L. Dennis Developmental Center

Phone: 501-364-1830 / Fax: 501-364-4967

The James L. Dennis Developmental Center specializes in the assessment of developmental conditions that result in delayed milestones, inability to communicate effectively, inattention, hyperactivity, impulsivity, learning problems, and poor or atypical social interactions.

Kids First

Phone: 501-526-8700 / Fax: 501-526-8740

Arkansas' first pediatric day health care program for children with special health care needs. **For more information, visit kidsfirst.uams.edu.**

Notes



HOSPITALS • RESEARCH • FOUNDATION

archildrens.org