

Arkansas Children's Hospital Nursery Alliance

A quality collaborative focused on improving neonatal clinical outcomes through partnership and best practice



NURSERY ALLIANCE

BIG PICTURE

- Arkansas Statistics:
 - 1st – Highest Teen Pregnancy Rate
 - 2nd – Infant Mortality
 - 6th – Premature Death



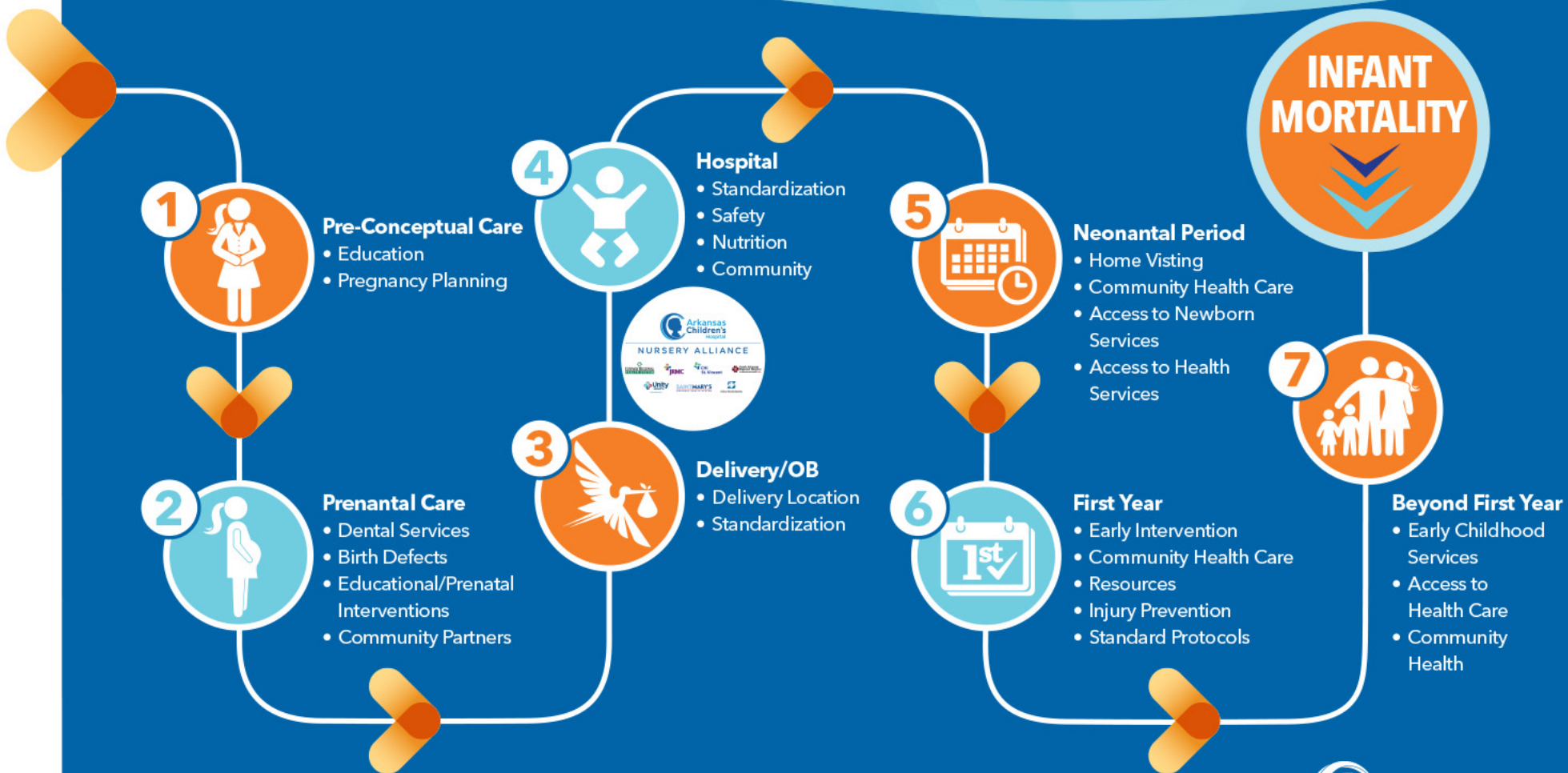
LOWERING INFANT MORTALITY

THE PATH To Lower Infant Mortality

8.2
PER
1000¹

6 PER
WEEK²

49TH



1. Centers for Disease Control & Prevention. (2017). Infant Mortality Rates by State. Retrieved from CDC National Center for Health Statistics: http://www.cdc.gov/nchs/pressroom/sosmap/infant_mortality_rates/infant_mortality.htm
2. Number of Arkansas children that die per week before 1st birthday.

MISSION & VISION

- To improve neonatal clinical outcomes through the information of a quality collaborative and to ultimately reduce infant mortality across the state
- Quality neonatal care, everywhere



NURSERY ALLIANCE

TEAM-BASED APPROACH

- Collaborative
- Holistic/Comprehensive
- Multiple Levels of Engagement
 - Executives
 - Physicians
 - Nurses
 - Registered Respiratory Therapists
 - Marketing Team
 - Local Community



NURSERY ALLIANCE



5-YEAR STRATEGIC PLAN

- Collaboratively Developed with Partners
 - Escalation/Stabilization of Care
 - Shared polices and procedures
 - Safety
 - Creation of specific care pathways, specialty roles, and exploring barriers to safety
 - Focus on Safe Sleep
 - Nutrition
 - Expansion of breastfeeding supportive services
 - Expand telemedicine capabilities in partner nurseries
 - Collective sharing of Neonatal Abstinence Syndrome (NAS) resources to promote consistency in management



THE NURSERY ALLIANCE DOES

- Align and recommend best care practices across the network
- Raise awareness about AR Clinical Practice guidelines
- Work to keep patients closer to home
- Allocate resources to partners e.g., educational support, policy sharing, and specialty consultations
- Collaboratively work on initiatives at partner facilities to support “moving the needle” on infant mortality
- Capture and present data for benchmarking
- Help identify community partners to further the mission



THE NURSERY ALLIANCE DOES NOT

- Take over partner nurseries
- Dictate how other nurseries should practice
- Provide governance over partner nurseries
- Recruit patient transports
- Use data to discredit partner nurseries



NURSERY ALLIANCE

NURSERY ALLIANCE WINS

- Helped partners to provide better respiratory support
- Recommended best practices to improve neonatal health in areas such as developmental care, breast support, and non-invasive neonatal hypoglycemia management
- Built better relationships with community partners and resources
- Facilitated conferences to address topics related to infant mortality, telemedicine, neonatal withdrawal syndrome, and COVID-19
- Partner specific trainings for NRP, STABLE, and safety baby showers



NURSERY ALLIANCE

NEONATAL LEVELS OF CARE

- Designated by Arkansas Department of Health
- Partially adapted from the AAP

LEVEL I	LEVEL II	LEVEL III	LEVEL IIIB	LEVEL IV
<ul style="list-style-type: none"> • Provides basic neonatal services 	<ul style="list-style-type: none"> • Moderately ill neonates, problems expected to resolve rapidly • Ventilation \leq 24 hours 	<ul style="list-style-type: none"> • Have specialty needs but not at a Level IIIB or higher facility 	<ul style="list-style-type: none"> • Do not need services provided by Level IV facility 	<ul style="list-style-type: none"> • Highest level of care • Offer the most advanced care for infants
<ul style="list-style-type: none"> • Low risk infants • Age > 35 weeks 	<ul style="list-style-type: none"> • Age > 32 weeks • Weight = 1500 grams 	<ul style="list-style-type: none"> • Age \geq 26 weeks • Weight > 750 grams 	<ul style="list-style-type: none"> • Age < 26 weeks • Weight < 750 grams 	<ul style="list-style-type: none"> • Specialty care <ul style="list-style-type: none"> ○ ECMO ○ Surgical Services
<ul style="list-style-type: none"> • 12 facilities in AR 	<ul style="list-style-type: none"> • 13 facilities in AR 	<ul style="list-style-type: none"> • 5 facilities in AR 	<ul style="list-style-type: none"> • 2 facilities in AR <ul style="list-style-type: none"> ○ Baptist ○ UAMS 	<ul style="list-style-type: none"> • ACH is the only facility in AR



LOOKING TO THE FUTURE

- Expansion of the Network
- Growing Partnerships
- Pilot Opportunities
- State-wide Database
- Quality Collaborative



NURSERY ALLIANCE

QUESTIONS & COMMENTS

Thank you for your time!

Please reach out with any questions, comments,
or for more information.

Dr. Ashley Ross

ACH Section Chief, Neonatology

rossashleys@uams.edu



NURSERY ALLIANCE